

So Your University Wants to Go Online?

An engaging conversation about providing access
and accommodations online.

Terry Watson, M.S.

Maggie Kwok, M.Ed.



PennState

Check list of your institutional competencies

- Process
- Procedures
- Resources



To show this poll

1

Install the app from
pollev.com/app

2

Start the presentation

Still not working? Get help at pollev.com/app/help
or

[Open poll in your web browser](#)



Pe

Today's Conversation

- Criteria for online learning
- Accommodating and Access Online
- Looking at **S.w.O.t** for online learning
- Training and Engaging the University
- Other things to consider

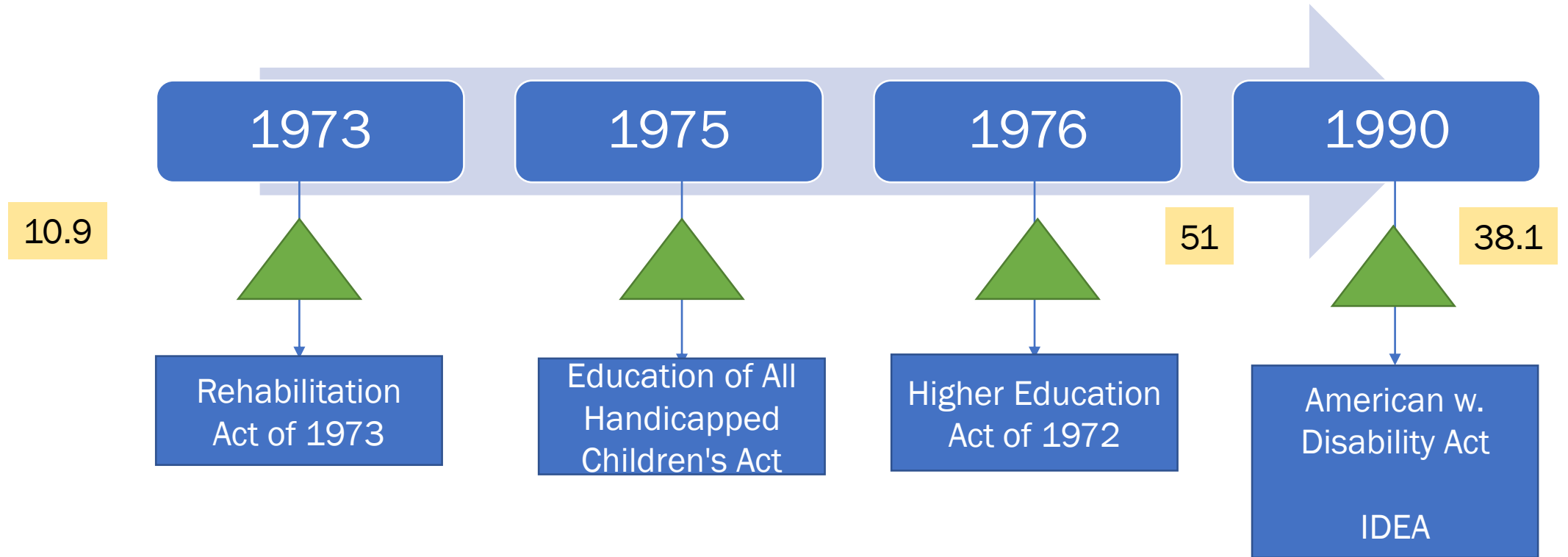


Criteria for online learning

- ADA Age Knowledge gap
- Military/Veteran vs. civilian
- Category of Disclosure
- Anonymity of the student
- Innovation vs. access

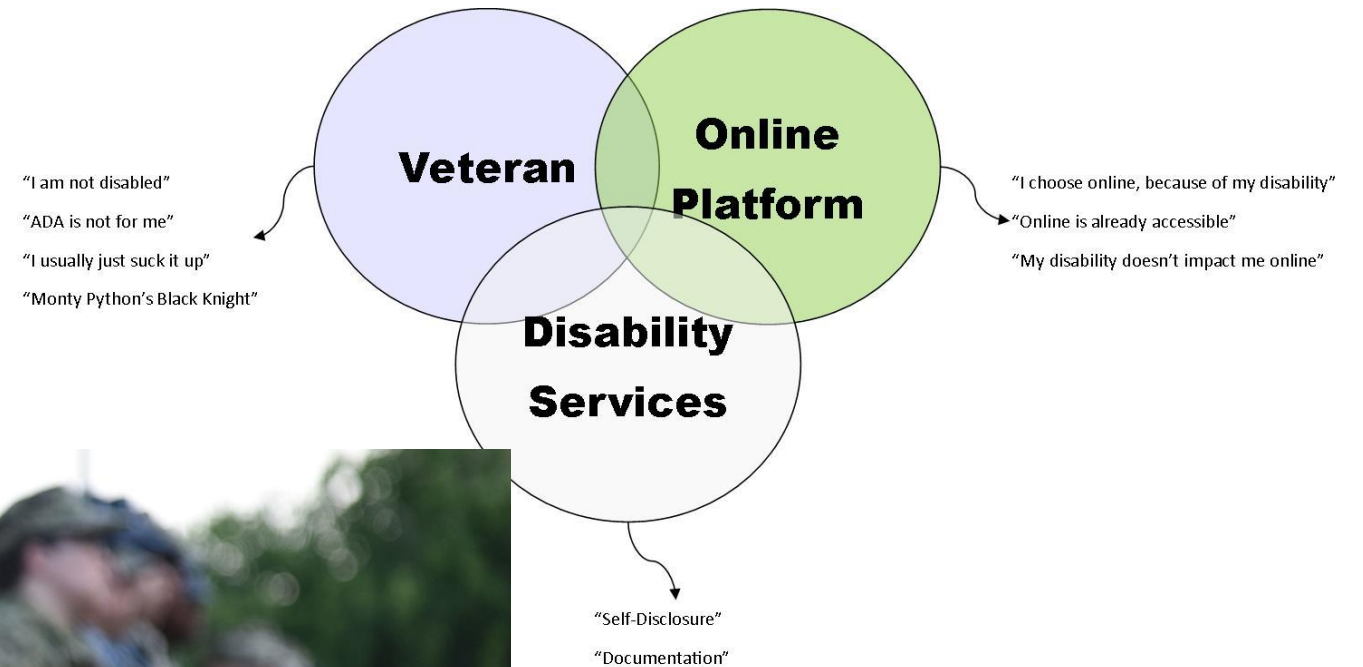


ADA Knowledge Gap



Military/Veteran Students



- VOSD Project Initiative



Anonymity of the Student



Category of Disclosure



To show this poll



1

Install the app from
pollev.com/app

2

Start the presentation

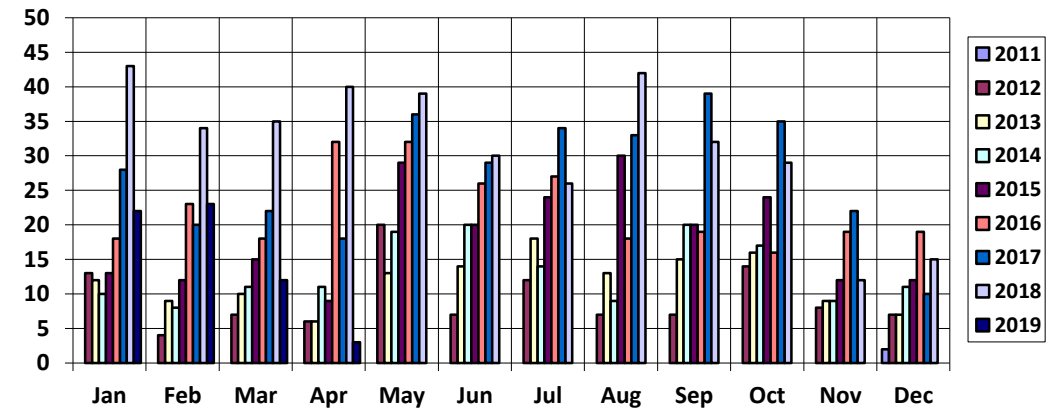
Still not working? Get help at pollev.com/app/help
or
[Open poll in your web browser](#)



Category of Disclosure

- Inconclusive: “I have nothing”
- Proactive: “History works well”
- Semi-Proactive: “History of conflict”
- Reactive: “Oh no!”

Number of Incoming SDS students (By Month)



Build the Village

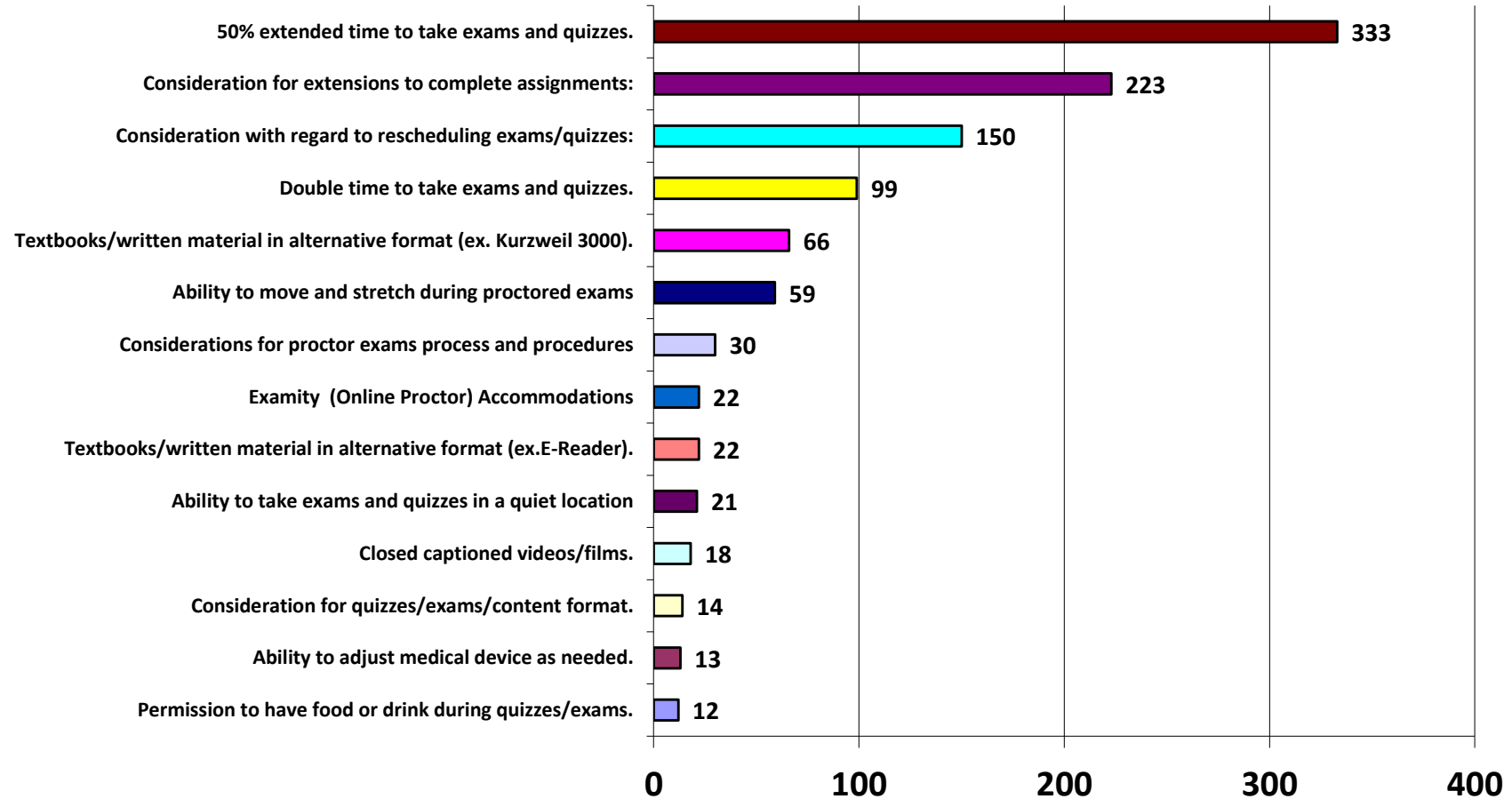
- Building bridges to last
- What offices do you collaborate with daily/weekly/semester basis?



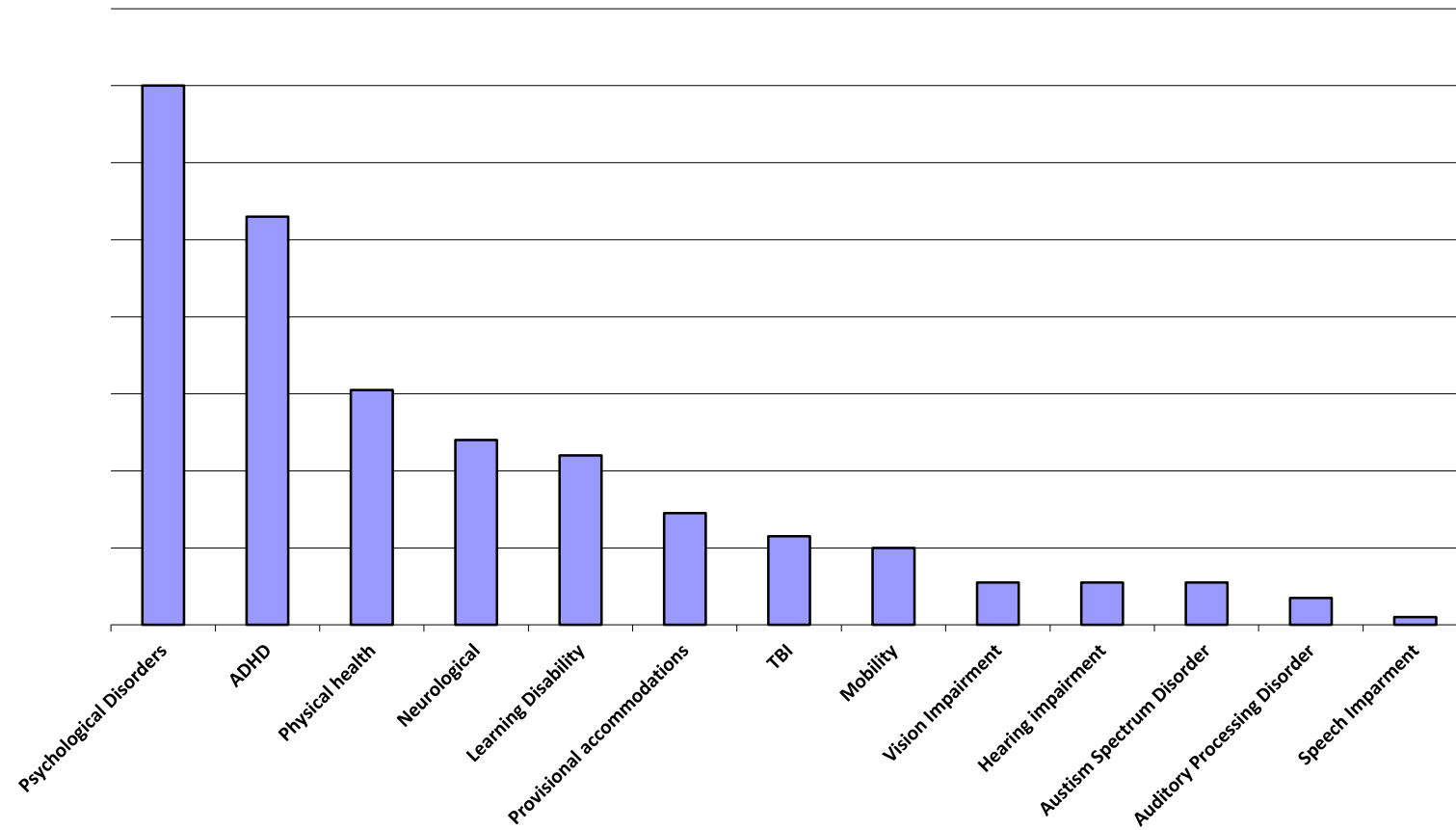
Accommodating and Access Online

- Data on accommodation
- The “Village” of accessibility
- Brick and mortar vs. Online platform

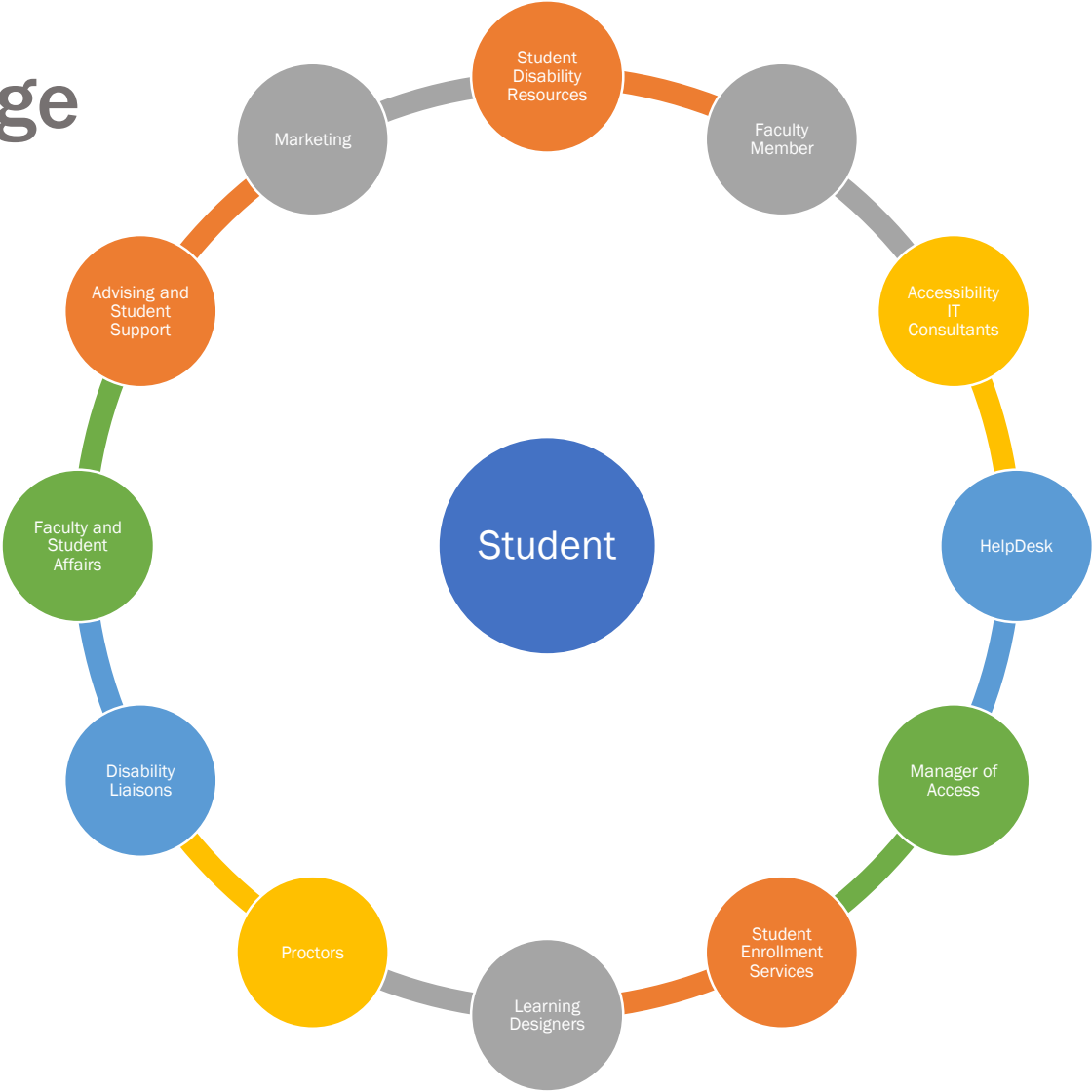
Current Accommodations At WD



Type of Disabilities



Accessibility - Our Village



S.w.O.t – Your Turn

Social phobias

Traumatic Brain Injuries

Chronic illness

Neurodiversity

Mobility

Sensory impairment

STRENGTHS

WEAKNESSES

OPPORTUNITIES

THREATS

To show this poll

1

Install the app from
pollev.com/app

2

Start the presentation

Still not working? Get help at pollev.com/app/help
or

[Open poll in your web browser](#)



Looking at **SwOt** for online learning

- Online proctored exams
- Student/University rapport
- Flexibility of online



Training and Engaging the University

- Use your village
- Academic advising Disability Reps
- “Multiple Means”
- Using an adverse situation for your benefit



Detroit Pistons: Using an adverse situation for your benefit



Faculty engaging with Disability Services
How faculty and disability services should work together?
World Campus Academic Advising & Student Disability Services

Tuesday, January 22, 2019 at 9 AM: <https://psu.zoom.us/j/806663627>
Thursday, January 31, 2019 at 3:30 PM: <https://psu.zoom.us/j/458045337>

Terry Watson, Assistant Director, Student Disability Services
Joan H. Smeltzer, Assistant Teaching Professor, Penn State York Campus

 **PennState**

My name is Terry Watson for those who don't know,
I am the assistant director for student disability services.
And I'll let Joan introduce herself.

Other things to consider

- Working across state lines
- LMS/CMS and general student representation
- Personas and Workshops



Questions.....

Terry L. Watson (tlw37@psu.edu)
Maggie Kwok (mik5045@psu.edu)

